



Version 2.5.2

[What Does Dunce Do?](#)

[Installing the Program](#)

[Using all its features](#)

[Tips](#)

[License Agreement](#)

[Contacting the Author](#)

[Other Items of Interest](#)

[Index](#)

Dunce (or **Dial-Up Networking Connection Enhancement**) allows for much easier dial-up networking than Win95 currently provides.

The program will automatically press "connect" for you on the "Connect To" dialog box, redial your Internet Provider indefinitely (even from within another application), and auto-reconnect if you get unexpectedly dropped. Dunce will also enter your password in the Connect To Dialog.

Furthermore it can optionally run applications when you are connected and force connections at a given time. It supports MSN and international versions of Windows.

[Installing the Program](#)

[How to Use Dunce](#)

## System Requirements

- Before you do anything if you've been using a previous copy of Dunce delete the shortcut in the StartUp Items, just trust me on this one okay. Also make sure that you Quit out of the old version of Dunce, you can do this by Right Clicking on the small icon next to the clock in your taskbar and then clicking on the Quit button.
- Expand Dunce into a directory of its own, probably c:\dunce, with whatever program you use to extract zip files.
- Now all you have to do is run the dunce.exe file.
- Dunce will prompt you if you want it to install it as a StartUp Item. Please say Yes to this prompt. Dunce will only work if it is loaded. You can load it manually whenever you want it if you want but it is so small that there is little reason for this. This operation places a value into the Registry.
- If you do not already have a file named URL.DLL in your System Directory Dunce may prompt you if you want to install the URL.DLL file into your System Directory. If you intend to use the AutoDial feature say yes to this prompt. The AutoDial feature allows Dunce to dial into your Internet Provider when a WinSock program requests a Network Resource. Some Users may already have the URL.DLL file since it is included in Microsoft Plus! and Internet Explorer 2.x and 3.x. If you already have this file Dunce will not prompt nor replace the file.

***NOTE ALL ENTERED PASSWORDS FROM PREVIOUS VERSIONS OF DUNCE ARE LOST WHEN YOU INSTALL THIS VERSION. THIS IS DUE TO A CHANGE IN THE ENCRYPTION ROUTINE.***

## Uninstalling Dunce

## System Requirements

---

Processor Family:	Intel 80x86 (minimum 80386)
Clock Speed:	33 MHz
Minimum OS:	Windows 95
Standard RAM:	136K
Hard Drive Space:	224K
Req'd Software:	Dial-Up Networking and/or The Microsoft Network. All Included in Windows 95.

- Find the executable files of Duncce (duncce.exe) on your machine.
- Double click on the Duncce executable until you see a dialog (1-2 double-clicks).
- In the dialog go to the Misc tab.
- Uncheck the AutoLoad Duncce on Startup
- Click on the Apply Button.
- Click on the Quit Button.
- Now you can delete the files from your machine safely.
- If you have difficulty removing files check if they are Read-only by:
  - Clicking on the file and type Alt+Enter
  - Unchecking the Read-only checkbox
  - Clicking on the OK button.

How do I use Dunce? Well this question is easy to answer. You just install it and then you use Dial-Up Networking the way you did before. Dunce does **NOT** replace the dialer, it merely interfaces with it.

The follow sections provide details of Dunce's capabilities and how you setup each feature to enhance your particular methods of operation.

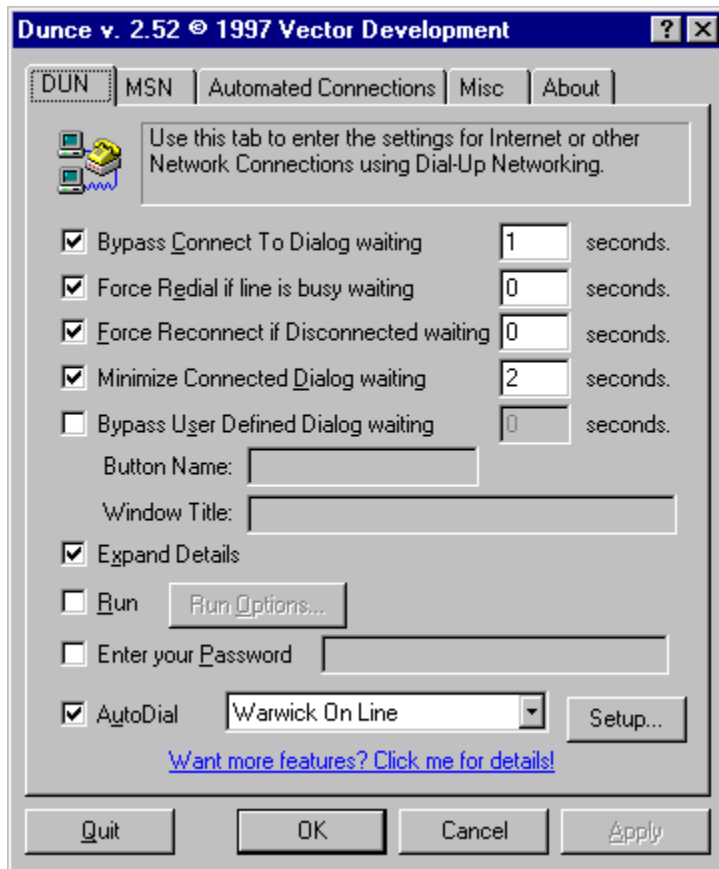
[Main Dialog](#)

[Run Dialog](#)

Now that you have Dunce installed on your system we can begin looking at its features.

The very first time you run Dunce a splash screen will be displayed (this is a once per version screen so don't worry about it). After it the main dialog is displayed .

Once again this dialog is only brought up the brought up the **very first time** that you start Dunce.



This is the control center of Dunce everything is either located in this dialog or can be accessed from it.

There are two methods of bringing this dialog up. You may run the dunce.exe program (by double clicking on it or selecting it from the Start Menu if you added it) or from the Tray, which we will deal with later.

The Main Dialog is divided into sections with tabs to navigate between them. You can click on the tabs to switch between each section or the keyboard shortcut: Ctrl+Tab.

At the bottom of the Dialog are the following buttons:

- **Quit**  
This unloads Dunce from memory and makes all of its features unusable until it is run again. Unusual to use unless you're testing a lot like me.

- **OK or Close**  
The Normal, just saves what you changed and closes the dialog.
- **Cancel**  
Cancels the changes and closes the dialog.
- **Apply**  
Saves the settings you have selected without closing the dialog box. Once you do this you cannot Cancel these settings thus, the Cancel button becomes disabled and the OK button is retitled Close.

The following tabs comprise the Main Dialog.

[DUN Tab](#)

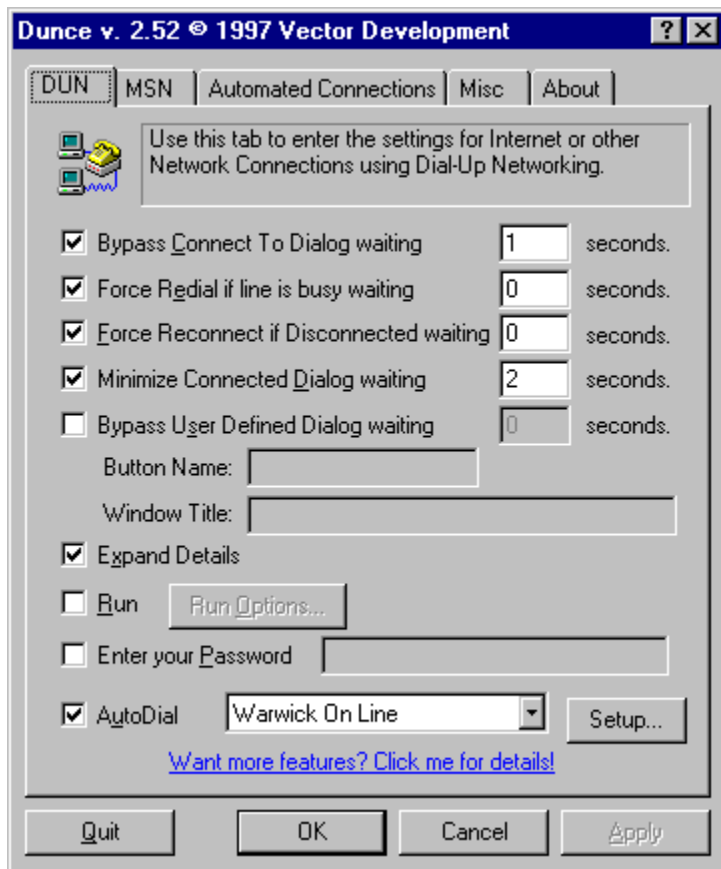
[MSN Tab](#)

[Automated Connections Tab](#)

[Misc Tab](#)

[About Tab](#)





This tab contains the features that specifically relate to Dial-Up Networking Connections.

(continue below...)

- **Connect To Dialog**

This checkbox controls if Dunce presses connect on the Connect To dialog, this is really a necessity but if you don't want Dunce to press the connect button for you it can be turned off. The edit box right beside it sets the number of seconds Dunce waits after detecting the dialog box before pressing connect for you.

- **Force Redial if line is busy**

This feature will cause Dunce to press okay on the dialog that comes up telling you that the line is busy. The edit box next to it again corresponds to the amount of time Dunce waits after seeing this box, this can be useful to give modems time to reset.

**NOTE** This should not be a replacement for the redial feature in the Dial-Up Networking folder, this feature is really for those of you who are using AutoDial so that when you run a program that requires a network socket it starts the connection to your provider. When dialing in this way Dial-Up Networking will **NOT** redial - that's were Dunce comes in.

- **Force Reconnect if Disconnected**

This feature causes Dunce to respond OK to the Windows 95 Reestablish Connection Dialog. Again the edit box sets the time Dunce waits before responding after seeing the dialog.

**NOTE** If you want Dunce to hit Cancel to this dialog open up the ini file and change the ForceReconnect= setting to 2. Like: ForceReconnect=2. This may be necessary in some cases where you are using Automated Connections and your ISP drops on you since DUN won't allow another connection until that box is responded to. Sorry, this doesn't have a user-interface as it was thrown in at the last minute. You have to quit Dunce and restart it before this takes effect or do a reload of the ini file see below for more info (the Cancel feature that is, the OK feature doesn't require this).

This feature has another hack in it. Currently if you're bumped off the server, Dunce treats this as a normal disconnect event and will close programs setup to close on disconnect (see the Run Options section for details on this feature). If you don't want it to close programs when you're bumped off the server but still close them if you normally disconnect then add this to your dunce.ini file in the [DUNCE] section: CloseProgramsOnReconnect=0 That will prevent programs from closing **ONLY** when a ReEstablish Connection Dialog shows up.

- **Minimize Connected Dialog**

When the Connected To dialog telling you that you have been connected to the service comes up Dunce will minimize it after the amount of time specified in the edit box to the right of this check box.

**NOTE** This feature really doesn't work with OEM Service Release 2 (OSR2) so I have disabled it if you are running OSR2.

- **User Defined**

This checkbox toggles the User Defined Dialog defined in the edit boxes below. This allows everyone to add their favorite dialog to the items that Dunce handles. Just like all the other features there is an edit box to the right of the checkbox to determine the timeout after which Dunce handles the dialog.

- **Button Name**

This edit box contains the name of the button that you want Dunce to press when it detects the User Defined Dialog. If the Button you want pressed contains an underline in the name then you must add an ampersand **BEFORE** the character that is Underlined. (*i.e.* *The Button is named Help and the H is underlined I would enter &Help in the Button Name Edit Box.*)

- **Window Title**

This edit box contains the Title of the Window that you want Dunce to watch for and then handle. Example: I want Dunce to press OK at the Dialog that comes up prompt me for the Callback Number. This dialog is Titled "Callback Security" as is displayed at the top in the title bar to the left of the close box (the one with X in it). So I type Callback Security in the Window Title Edit box and enter OK in the Button Name Edit box.

- **Expand Details**

When the Connected To dialog shows up this makes it so it automatically expands the dialog out

to show you what protocol the connection was done under. There is no edit box on this feature to control how long after seeing the dialog it does this. However, it uses the same time settings as the Minimize Connected Dialog feature does. Again, this isn't really necessary with OSR2 but I left it enabled since it works, why you would want to use it is beyond me.

- **Run**

This checkbox toggles if Dunce will Run programs at various times during your connection. This feature is **NOT** compatible with MSN connections, Sorry. To configure it click on the Run Options button, information on that dialog is found below.

- **Password**

This lets Dunce type in a Password for you in the Connect To Dialog Box. Obviously the box to the right of this checkbox contains the password that Dunce will enter. This is useful if you can't use Password Caching built into 95 or if yours is broken (which is the case for many people who have upgraded to Service Pack 1, see the [Dunce tips WWW](#) page for more info on this).

**NOTE** The password is encrypted however the encryption is not secure enough to keep out a fairly well versed hacker or the NSA (National Security Administration, a yucky U.S. invention). However, with your password being saved you're really relying upon the physical security of the system anyway because they could just walk up and log on as you. In any case Vector Development will **NOT** take any responsibility for the security of this password. The encryption is there to make you feel a little bit safer but it isn't DES or anything.

- **AutoDial**

When this checkbox is checked Dunce will cause a dialout when a WinSock Application (32-bit only) attempts to access a network resource. The List Box to this checkbox's right contains the list of connections that are available, select the one you want Dunce to dial when the action described above occurs. The Setup Button to the far right brings up the Properties for the connection currently listed in the List Box. Example: I open up Netscape, Dunce will then cause the connection that is listed in the List Box to start.

**NOTE** This feature is implemented by the URL.DLL. This file is licensed to Vector Development by Microsoft. If you do not like the way that the it dials out complain to them not me. Also be sure that if Dunce prompts you to place this file in your System Directory that you say Yes if you intend to use this feature. If this file isn't installed in the System Directory when you turn this feature on, Dunce will prompt you again to install it.

DUN Tab

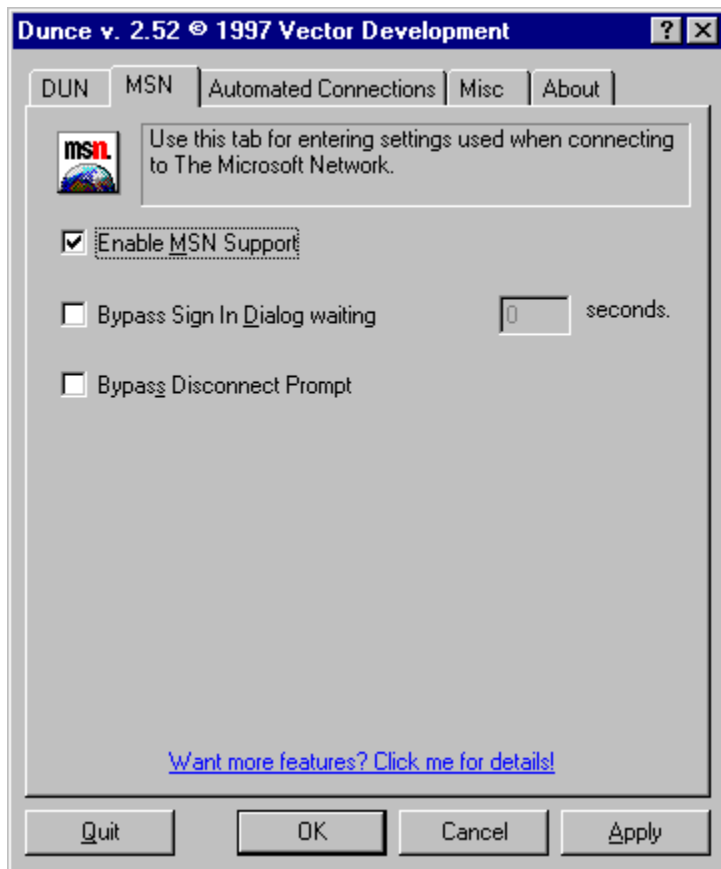
[MSN Tab](#)

[Automated Connection Tab](#)

[Misc Tab](#)

[About Tab](#)

[Run Dialog](#)



This tab controls the two features of Dunce that relate to the Microsoft Network.

Unlike previous versions of Dunce you no longer have to enter the path of the Guide.exe file.

(continue below...)

- **MSN**  
This checkbox toggles MSN features.
- **Delay Sign In Dialog**  
This tells Dunce to click Connect after it sees the Sign In Dialog. It waits the number of seconds specified in the edit box to the right.
- **Quick Shutdown**  
This tells Dunce that when Microsoft Network asks if you're sure you want to disconnect to say Yes. Dunce does this immediately. There is no delay.

[DUN Tab](#)

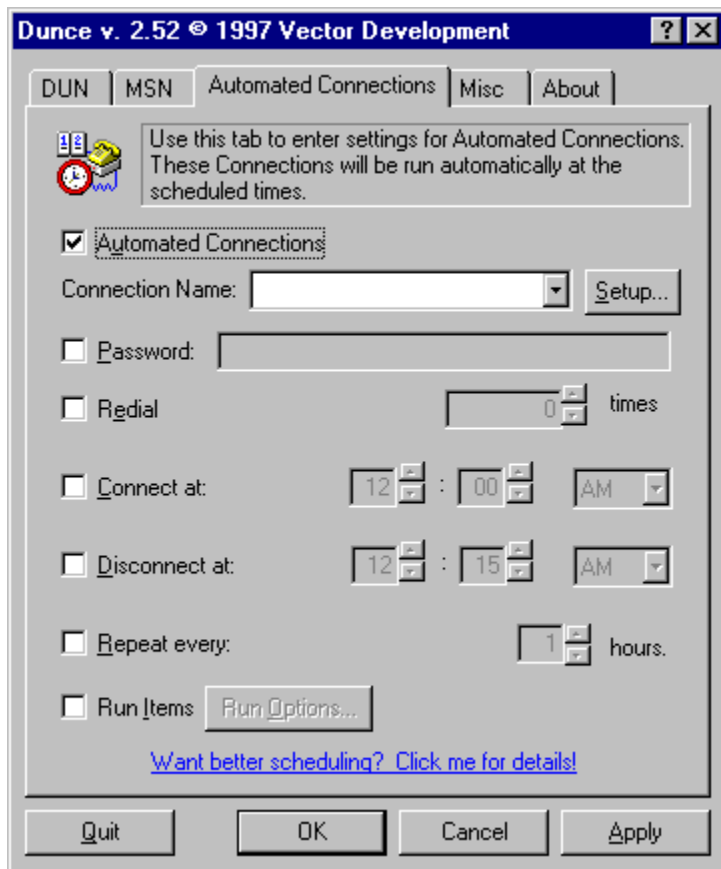
MSN Tab

[Automated Connection Tab](#)

[Misc Tab](#)

[About Tab](#)

[Run Dialog](#)



This is probably the most confusing tab in Dunce.

It allows you to control when Dunce will activate a given connection without you even being there.

Really useful, eh?

(continue below...)

- **Automated Connections**  
This toggles Automated Connections being on or off.
- **Connection Name**

This drop-down box lists all of the connections on your system. You select the connection that you want Dunce to dial into at the specified time below here.

- **Setup**  
This button allows you to get to the property sheet of the Connection so that you can change phone numbers etc...
- **Password**  
This is the password to use for this connection. This is a separate password from the one in the main dialog and is stored separately. If you are using Password Caching you can leave this checkbox unchecked and Dunce will use your cached password.
- **Redial**  
This sets the number of times Dunce will attempt to connect for a given Automated Connection. This has no effect on other connection types. If this checkbox is unchecked then no redials will occur. Events that trigger redials include busy signals and no dial tones.
- **Connect at**  
This is the time that Dunce will Connect at. I think this is self-explanatory for the most part.
- **Disconnect at**  
This is the time that Dunce will Disconnect at. This event will only occur if Dunce made the connection.
- **Repeat every**  
Repeats this process every x number of hours as the box says. (*i.e. Dunce is setup to connect at 8:00 A.M. and disconnect at 8:15 A.M. If the repeat hour rate is set to 2 hours then Dunce will also connect at 10:00 A.M and disconnect at 10:15 A.M and also at 12:00 P.M. and 12:15 P.M. and so on...*)
- **Run Items**  
This tells Dunce if you want it to run some of the run Items that are checked as Active for Automated Connections. This toggles all of them on or off.
- **Run Options**  
This button brings up the Run Options Dialog.

[DUN Tab](#)

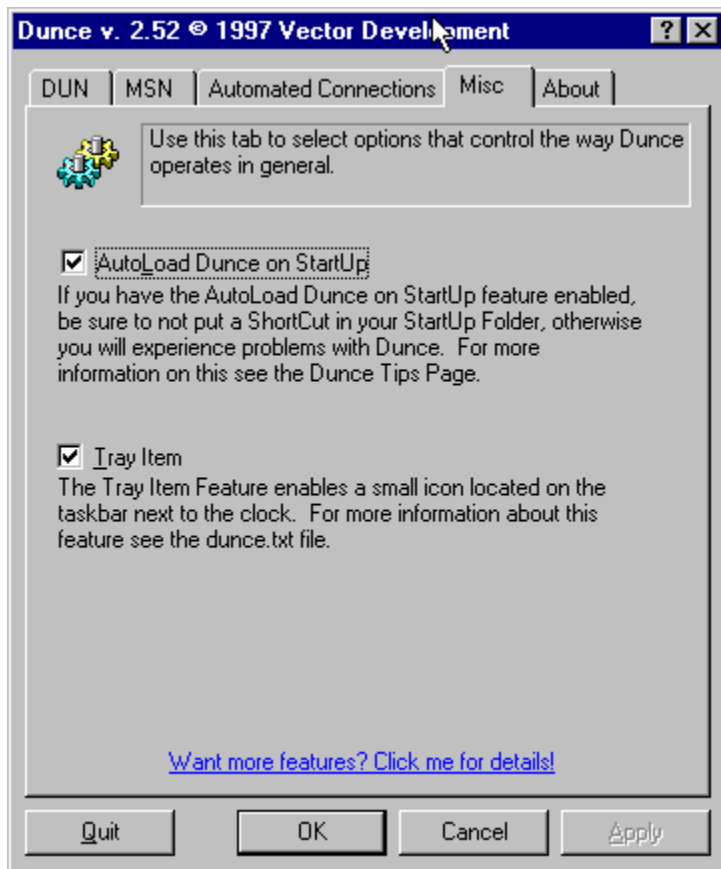
[MSN Tab](#)

Automated Connection Tab

[Misc Tab](#)

[About Tab](#)

[Run Dialog](#)



This tab has miscellaneous settings that control the way Dunc behaves.

(continue below...)

- **AutoLoad Dunc on Startup**

This lets you toggle if Dunc is installed as a program to load when Windows95 starts up in the registry. More than likely you will always leave this checked.

**NOTE** There is no corresponding .ini setting to this feature. Dunc looks to see if its path matches the one in the Registry. For those wondering how this works it places a Value titled



Dunce in the following Registry Key: HKEY\_LOCAL\_MACHINE\SOFTWARE\Microsoft\Windows\CurrentVersion\Run

If you want to make this so it only runs for a specific user Delete this key and place the key in the following place:

HKEY\_CURRENT\_USER\Software\Microsoft\Windows\CurrentVersion\Run. If you do this the Checkbox will no longer show as checked.

- **Tray Item**

This enables a tray item. You ask what is a tray item? A tray item is a small icon that sits on the lower right hand corner of your taskbar (for most people) next to the clock.

The tray item has three uses.

1) It tells you Duncie is running.

2) It gives you an easy way to turn Duncie off. Just left click on the icon and it will toggle Duncie's features off and on.

3) You can access a menu with several options on it. I think these options are self explanatory. Cool, eeh?

[DUN Tab](#)

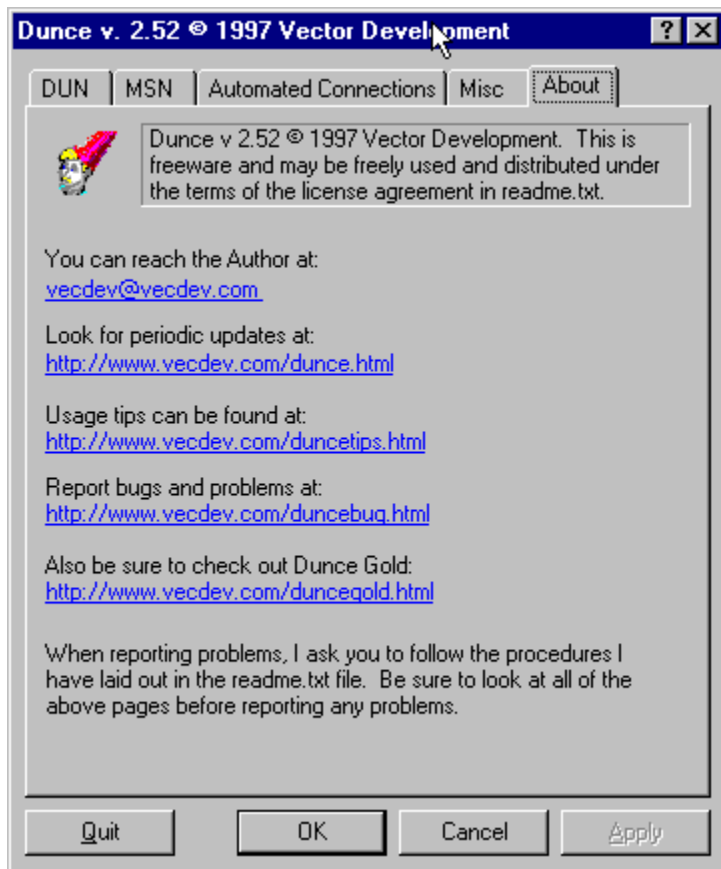
[MSN Tab](#)

[Automated Connection Tab](#)

Misc Tab

[About Tab](#)

[Run Dialog](#)



This tab contains my email address and various web sites that contain useful information for you. You can copy these by selecting them and then typing Ctrl+C.

(Continue below...)

[DUN Tab](#)

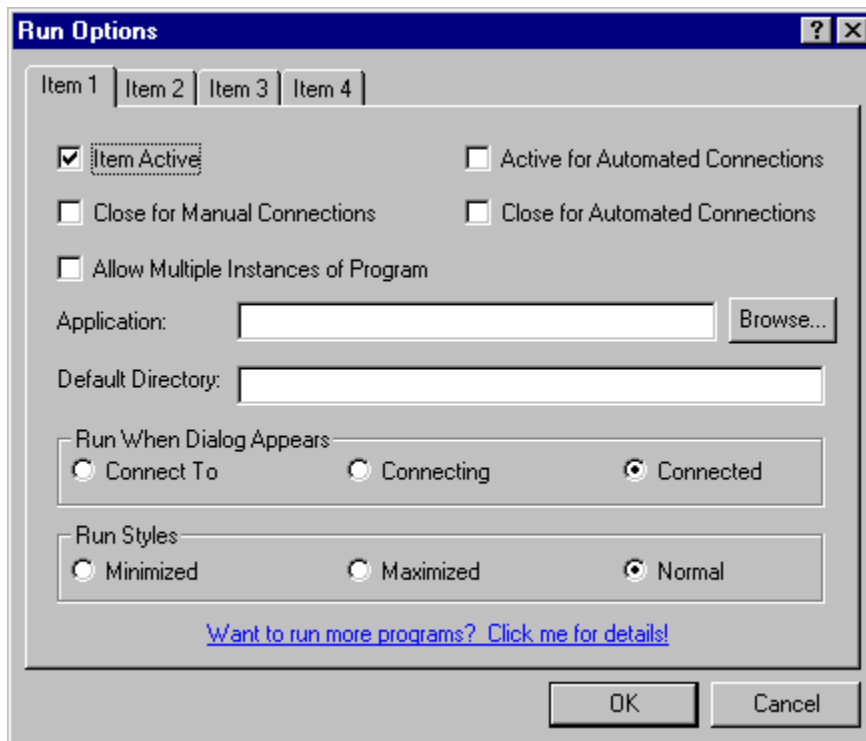
[MSN Tab](#)

[Automated Connection Tab](#)

[Misc Tab](#)

About Tab

[Run Dialog](#)



This tabbed dialog lets you easily access the four run items. Each item has its own tab and each item has the same settings so we will only cover what each control does once.

- **Item Active**  
This checkbox controls if this item is Active for manually or Auto-Dial connections (i.e. connections that you either double clicked on the connection icon to start or ones that a WinSock program started). This does not control if an item is active for Dunces Automated Connections.
- **Active for Automated Connections**  
This checkbox toggles if this item will be run when Dunces executes an Automated Connection. See the Automated Connections Dialog for more info on this.
- **Close for Manual Connections**  
If this checkbox is checked it means that Dunces will close this program when DUN disconnects from the server. Note, currently it doesn't close if you get dumped off the server, this is intentional. Let me know if you don't like it. This feature will be disabled if your path contains C:\WINDOWS\EXPLORER.EXE. If it was enabled it might close the Shell on you which isn't much fun.
- **Close for Automated Connections**  
Does the same thing as Close for Manual Connections except this only occurs if Dunces Disconnects because it reaches the end of an Automated Connection session. If you Cancel

out of the disconnect and later disconnect, Dunce does NOT close out the program, unless it is setup to also close for Manual Connections. This feature will be disabled if your path contains C:\WINDOWS\EXPLORER.EXE. If it was enabled it might close the Shell on you which isn't much fun.

- **Allow Multiple Instances of Program**

If this checkbox is checked even if a copy of the program is already running Dunce will start another copy. This can be annoying if you get disconnected from the net and Dunce reconnects you and then runs another copy of Netscape for instance. This box is really an override box so you probably will leave it unchecked. Some programs such as Internet Mail and News from Microsoft require this checkbox to be enabled.

- **Application**

This Edit Box contains the name and full path to the executable that will be run for this item. If you use a path name that has a space in it (Long File Name) then you must enclose that path in quotes. This is because Dunce uses the first space it sees as the beginning of command line parameters that some programs use. *(i.e. If you wanted to have a program with a command line parameter that used a long file name also you would type: "c:\Connect Time Monitor\ccm30.exe" 1 where the 1 is the command line parameter.)*

- **Browse**

This button brings up a dialog box that will let you select the application that you want to run. In some cases (rare) you may find that it won't come up. If you're having this difficulty delete the contents of the Application box and then try.

- **Default Directory**

This Edit Box defaults to the directory that the application is in and changes itself to such if you change the application. However, you can change this if you want a program to look for files initially in a different directory. This is especially useful to start different copies of programs like Pegasus so that they use different .ini files.

- **Run When Dialog Appears**

This group of Radio Buttons allows you to tell Dunce when to run the program. Each radio box corresponds to the name of a dialog that Dial-Up Networking Displays as it connects you. If you're unsure about what to set this to set it to Connected To.

- **Run Styles**

This group of Radio Buttons allows you to tell Dunce how to run the program. I think the names of the buttons are obvious other than Normal which means what would happen if you just double-clicked and didn't have any special properties setup for that application. Some applications do not function with the Minimized or Maximized features. Dunce is following standard Windows procedures for starting these programs with this window style. If it doesn't work complain to the author of that program.

[Closing Dunce](#)

[Reload INI File](#)

[Shift Key](#)

[Frequently Asked Questions](#)

Vector Development maintains a tips page on our Website, that contains information on how to do lots of things that people commonly ask for. **Please** look at this page before sending an email.

The address for the Web tips page is:

<http://www.vecdev.com/tips.html>

## Closing Dunce

---

Some users have expressed the need to shutdown Dunce via a command line.

You can do this by running Dunce with the following command line (note that the quotes may or may not be appropriate according to where the command line is entered, consult the documentation for the software that you are entering it into):

```
"c:\dunce\dunce.exe" -q
```

## Reloading INI File

---

Some features tell you to quit out of Duncce and reload. Starting with version 2.4 there is a slightly more convenient way to do this.

Go to the Start Menu select Run and type: "c:\duncce\duncce.exe" -r The quotes are necessary especially if you have Duncce in a directory that involves spaces in its name. (Be sure to use the correct path - this is just an example.) Also note the -r is case sensitive.

This feature may be useful to disable/enable certain features from scripts like WinBatch.



## Shift Key

---

As each segment of the connection (i.e. Connect To, Connecting, and Connected, corresponds to the dialogs) begins if you hold down the shift key for a short time Duncie will not load the run items associated with that segment.

This works for the closing of programs as well. Just hold the shift key down as you disconnect.

Autodial doesn't work, what did I do wrong?

I am receiving an error message about 'Resources not loading', how do I fix this?

I'm having problems with Timed or Automated Connections, what am I doing wrong?

I get the Main Settings Dialog every time at startup, is this correct?

How can I get Duncce to start Microsoft's Internet Mail or Internet News?

How do I get Duncce to play a sound on connection?

I want to run more than 4 programs, how do I do it?

How do I get rid of the Terminal screen that I have to press F7 at?

Why isn't Allow Multiple Instances or Close Program Options not working?

Is there a better way to redial?

I want Duncce to close autofmatically when there is no activity, can it do it?

I'm having problems with Win95 Storing my password, do you know any fixes?

## **Autodial doesn't work, what did I do wrong?...**

**Solution #1** (the smaller but less effective one, in other words the problem may crop back up later)

1. Download the AutoDial.reg file.
2. Place it on your desktop.
3. Double Click on the file.
4. A note will come up saying:

"Information in C:\WINDOWS\DESKTOP\AUTODIAL.REG has been successfully entered into the registry." If you did not receive the final note you probably didn't get it on the desktop. If you can't get that note or one very similar to it to come up. Try the next set of instructions.

**Solution #2** (the bigger download but far more effective fix).

1. Redownload Duncie, I slipstreamed a fix in for this bug... It was so minor it didn't warrant a new release... Only people who downloaded version 2.4 on August 13th, should have this problem (slipstream was done at approximately 10:30 CST, August 13th, 1996).

## **I'm receiving an error message about resources not loading how do I fix this?...**

Check your RNAAPP.EXE File for the version number by locating the RNAAPP.EXE File in the following directory: c:\windows\system Click on the file and hit Alt+Enter and then select the Version Tab... Once you have the version number take one of the following actions based on that number:

Version # (? is a wild card)

4.00.950 Delete your RNAAPP.EXE and reinstall Dial-Up Networking. Your file is screwed up.

4.00.1???? This is OSR2, once again you should try reinstalling as described in above in 4.00.950 if you have problems with this file...

4.10.???? This file is not a valid file. If you received an error message add this setting to your dunce.ini file under the [DUNCE] section: 1040=0...

By the way I would suggest you get either the correct file or toss the copy of Nashville you have this is NOT Nashville, this is a bunch of OPK chopped up and put and is not stable, i.e. the binaries were not meant to run together...

4.70.???? This is the Nashville file, those of you with this file should no longer be experiencing problems. So if your getting an error try the same as 4.00.950...

If your version number doesn't match any of the above or if none of those fixes work for you try the 1040 setting as described in the 4.10.???? fix. You can set this to 0 or 1. If you are not experiencing any problems after you first run Duncer DO NOT add this flag. This flag overrides my version detection algorithm, if you add it to the file whatsoever and your not having problems more than likely it is going to break what was working. In short if it's working don't try to fix it.

## **I'm experiencing problems with Timed Connections or Automated Connections, what am I doing wrong?...**

Timed Connections in versions 2.0.2 and 2.3 have lots of bugs, get version 2.4 or newer, it should fix the problems.

## Every time I startup I get the Main Settings Dialog, isn't this only supposed to happen the VERY 1st time I run Dunce?...

Yes, that's correct there are two reasons why you could be getting this problem, both of which occurred because of your use of a previous version.

### **Solution #1** (Your mistake)

You forgot to delete the Shortcut in the StartUp Folder, to correct it:

1. Go to the Start Menu and select Run...
2. In the box type (yes, the quotes are required):  
**"c:\windows\Start Menu\Programs\StartUp"**
3. Click on the Dunce Icon and hit the Delete Key.
4. Say yes, you do want to send the file to the Recycle Bin

### **Solution #2** (Dunce's mistake, this is **ONLY** a version 2.3 problem)

Dunce didn't virginize your ini file, to correct it either delete the dunce.ini file or follow these steps:

1. Open your dunce.ini file (in the same directory as your dunce.exe file).
2. Find any lines that begin like this: Splash??=0  
where ?? stands for a number, e.g. Splash20=0 or Splash13=0
3. Delete those lines but leave in the line that is Splash23=0
4. Save the file.

## How can I make Dunce start Microsoft's Internet Mail or Internet News?...

To start Internet Mail use the following command line, the quotes are necessary:

```
"C:\WINDOWS\EXPLORER.EXE" /root,C:\WINDOWS\Internet Mail.{89292102-4755-11cf-9DC2-00AA006C2B84}
```

To start Internet News use the following command line, the quotes are necessary:

```
"C:\WINDOWS\EXPLORER.EXE" /root,C:\WINDOWS\Internet News.{89292103-4755-11cf-9DC2-00AA006C2B84}
```

In both cases be sure to check the Allow Multiple Instances checkbox for each one of these programs' properties. Otherwise Dunce will not run the program because it will already find EXPLORER.EXE running.

Also note Close Program Features **DOES NOT** work with these applications and Dunce will disable those checkboxes

## How do I get Duncie to play a sound at connection?...

Use this as your command line in one of the Run Items:

```
"C:\WINDOWS\sndrec32.exe" /play /close c:\wav\terminat.wav
```

Where c:\wav\terminat.wav is the sound you want to play.



## **I want to run more than 4 Programs, how do I do it?...**

Create a batch file then for each program you want in a given batch file add a line that follows the following syntax:

```
START [options] program [arg...]  
START [options] document.ext
```

```
/m[minimized] Run the new program minimized (in the background).  
/max[imized] Run the new program maximized (in the foreground).  
/r[restored] Run the new program restored (in the foreground). [default]  
/w[ait] Does not return until the other program exits.
```

You'll have to make a batch file for each one of the times when you want programs to run. I.E. you can't put a program that you want to run when your Connected with a program you want to run when the Connect To Dialog comes up in the same program.

## **How do I get rid of that Terminal Screen that I have to press F7 at?...**

Follow the instructions at: [Windows95.com](http://Windows95.com) Dial-Up Scripting Page

## **Why Isn't Allow Multiple Instances or Close Program Working?...**

There can be several reasons for this.

First of all you must use the normal path to the program not a shortcut. (*i.e. The application cannot be specified as c:\windows\desktop\Netscape.lnk it must be specified as c:\Netscape\program\Netscape.exe.*)

Some programs such as MS Internet News and Mail do not work with these features... Any program that has c:\windows\explorer.exe as part of its path falls into this category.

## **Is There A Better Way to Redial?...**

Yes, Duncie was not intended to redial all the time for you. It was meant to kick in and force re-dials when the normal Dial-Up Networking wouldn't do it.

Dial-Up Networking internally supports re-dials for up to 100 times on manually started connections (*i.e. this does not apply to AutoDial connections*). To enable this feature:

1. Open up the Dial-Up Networking Folder.
2. Go to the Connections Menu and Select Settings.
3. Check the Redial check box and set the number of retries.

## **I want Duncce to automatically close when there is no activity, can Duncce do this?...**

No, Duncce cannot, but the feature is already built into Dial-Up Networking. Here is how you enable it:

1. Open up the Dial-Up Networking Folder.
2. Click on the connection icon that you want to enable this for.
3. Type Alt+Enter or Right Click on the icon and select Properties.
4. In the Dialog that comes up Click on the Configure Button.
5. In the Dialog that comes up Click on the Connection Tab.
6. Check the checkbox labeled Disconnect a Call if Idle for more than.
7. Fill in the idle timeout value.

## **I'm having problems with Win95 storing my password, do you know any fixes?...**

You may want to read the following documents from Microsoft:

Dial-Up Networking Password Is Not Saved  
Save Password Check Box Is Unavailable

You may also find this patch useful: Windows 95 Password List Update **NOT THE SECURITY UPDATE!**

Use of Dunce (hereinafter called "SOFTWARE") is contingent on your agreement to the following terms:

### **1. GRANT OF LICENSE**

Vector Development (hereinafter Vector) grants you a limited, non-exclusive license to use the SOFTWARE free of charge if you are a student, faculty member or staff member of an educational institution or your use of the SOFTWARE is exclusively at home for non-commercial purposes.

If you do not meet the requirements for free use of the SOFTWARE, you may use the SOFTWARE for up to thirty (30) days for the purpose of evaluating whether to purchase the commercial release.

### **2. DISCLAIMER OF WARRANTY**

THE SOFTWARE IS PROVIDED AS IS WITHOUT WARRANTY OF ANY KIND. TO THE MAXIMUM EXTENT PERMITTED BY APPLICABLE LAW, VECTOR FURTHER DISCLAIMS ALL WARRANTIES, INCLUDING WITHOUT LIMITATION ANY IMPLIED WARRANTIES OF MERCHANTABILITY, FITNESS FOR A PARTICULAR PURPOSE, AND NONINFRINGEMENT. THE ENTIRE RISK ARISING OUT OF THE USE OR PERFORMANCE OF THE PRODUCT AND DOCUMENTATION REMAINS WITH RECIPIENT. TO THE MAXIMUM EXTENT PERMITTED BY APPLICABLE LAW, IN NO EVENT SHALL VECTOR BE LIABLE FOR ANY CONSEQUENTIAL, INCIDENTAL, DIRECT, INDIRECT, SPECIAL, PUNITIVE, OR OTHER DAMAGES WHATSOEVER (INCLUDING, WITHOUT LIMITATION, DAMAGES FOR LOSS OF BUSINESS PROFITS, BUSINESS INTERRUPTION, LOSS OF BUSINESS INFORMATION, OR OTHER PECUNIARY LOSS) ARISING OUT OF THIS AGREEMENT OR THE USE OF OR INABILITY TO USE THE PRODUCT, EVEN IF VECTOR HAS BEEN ADVISED OF THE POSSIBILITY OF SUCH DAMAGES.

### **3. SCOPE OF GRANT**

You may not reverse engineer, decompile or disassemble the SOFTWARE. Vector shall retain title and all ownership rights to the SOFTWARE.

### **4. COPYRIGHT**

This SOFTWARE is protected by copyright laws and international copyright treaties, as well as other intellectual property laws and treaties.

### **5. MAINTENANCE**

Vector is not obligated to provide maintenance or updates for the SOFTWARE. However, any maintenance or updates provided by Vector shall be covered by this Agreement.

### **6. DISTRIBUTION**

The SOFTWARE may be freely distributed provided that it is not modified and the original archive remains intact with all accompanying files, and provided that no fee is charged (except for any reasonable fees necessary to cover costs of distribution media). Should a fee be charged or any of the distribution package need to be modified you must contact Vector for explicit written permission.

## To Contact the Author

---

E-Mail:       vecdev@vecdev.com  
MSN:           ResDev  
US Mail:       3735 SW Sena Dr.  
                  Topeka KS 66604-1754  
IRC0:          ResDev on #win95-net  
Voice:         (913) 271-2175  
WWW:          <http://www.vecdev.com>

Look for updates on my WWW site periodically.

Please note I can't always respond to all your messages, I attempt to but it doesn't always happen. Please be patient. Remember look at the [Tips Page](#) before sending email about something. The MSN address isn't always checked on a regular basis.



[Acknowledgements](#)

[Bug Reports](#)

[Distribution](#)

[Donations](#)

[Dunce Gold](#)

[Dunce L](#)

[Future Plans for Dunce](#)

[Icon Contest](#)

[Known Bugs](#)

[Macintosh Support](#)

[Postcard Offer](#)

[System Requirements](#)

[Version History](#)

#### Version 1.x

mook, Nominal, Hunter, berky, mx-3, and all the others who reviewed 1.0 and made suggestions to me!!! Sorry if I left someone out I'm sure I did.

#### Version 2.0

Holzer, codeman, StealthM, Aarto, and a few others who I don't remember for Beta Testing. Holzer your work made Duncce one of the most tested freeware apps available :) Scott Craig, and Deanis for their help in implementing the Tray Item. <http://www.windows95.com> for distributing it.

#### Version 2.3

Holzer, StealthM, Herodotus, Brian Emanuels, and many more for either finding bugs or letting me know when they existed. B.E. esp. for the help on OSR2. Alan for your wonderful help on lots of things especially the Process walking code. You're a great friend, best of luck to you and FTPx. As with any program I must thank my Beta Testers. Unfortunately, that list has grown too large to put here. You know who you are. You guys make Duncce great.

#### Version 2.4

All of you who have tracked down hard to find bugs. Duncce just keeps getting better and better due to all of your hard work. I can't fix what you guys don't find.

Of special note was the work of Robert Salisbury who spent his 25 cents numerous times, literally, to make Automated Connections work right. Also Tack who spent several nights up late helping me fix Robert's bugs. There are too many beta testers who played other small roles to thank here but you all know I'm thinking of you.

#### Version 2.5

The very small beta testing crew for this release. There was a very small amount of change made to the actual code base that required extensive testing. However those who require commendation are: Tack, wa|| (please don't freak out again when it breaks it is beta code <g>). Craig (you know who you are) for letting me know that I had indeed fixed the URL.DLL bug and for suggestions on the tray. To the rest of you who will remain nameless thanks.

## Bug Reports

---

When reporting a bug always include the following:

- 1 A detailed description of the bug.
- 2 A copy of your DUNCE.INI pasted in the email or the appropriate part of the form (PLEASE NO ATTACHMENTS).
- 3 What version you're running.
- 4 What other applications or items in the startup folder were running when the error occurred.
- 5 Anything special about your install i.e. if you're not running the English version of 95 or some other special version of 95.

Doing these five things will speed up my bug fixes.

***It is best if you use our bug reporting form located at:  
<http://www.vecdev.com/duncebug.html>***

## Distribution

---

See the VENDINFO.DIZ file for "DISTRIBUTION" information. This file contains the files sizes and CRC values for all the files being distributed with Dunce.

Please do not remove the VENDINFO.DIZ file or any other file from the Dunce Distribution File.

## Donations

---

With this release we are no longer accepting donations. See [Dunce.Gold](#) for more details.

## ***What is Dunce Gold?***

Dunce Gold is an improved version of Dunce. It includes many of the features that users have requested yet we feel took too much of our time to release to the freeware market. As a service to users we will continue to distribute Dunce 2.5 and its upgrades/bug fixes. However, for those users who desire additional features we will sell Dunce Gold.

Some of the features of Dunce Gold will include but not be limited to:

- Settings stored for each individual Connection.
- Unlimited Run\_Options for **each** Connection.
- Better Scheduling and as many scheduled connections as you want for Automated Connections.
- Logging of connections.
- Pinging of the server.
- Idle Disconnects.

As of this release of the freeware version of Dunce, Dunce Gold is not available and is still in development. However, look for screen shots and details about the product as it is developed at:

<http://www.vecdev.com/gold.html>

or

<http://www.vecdev.com>

We plan to have online registration very soon and there will be a link from the above sites to the online registration. In the mean time there is a [U.S. Mail order form](#).

## Dunce L

---

In the past there was a mailing list for users of Dunce that you could manually subscribe to.

Starting with version 2.5 you are automatically added to this mailing list. Should you want to remove yourself from this list just follow the directions that you receive in the welcome email that you receive from the majordomo server.

## Future Plans

---

All future plans for Dunce are to be implemented as Gold features... These are outlined in [Dunce.Gold](#).



## Icon Contest

---

Thanks to David A. Karp of Creative Element for the icon. I love it.

Check out David's Windows Annoyances Page it's great. Tells you how to get rid of lots of those things you just wish would go away in Windows 95.

<http://www.creativelement.com/win95ann/>

## Known Bugs

---

*Some people are still having problems with the following:*

All Known bugs have been fixed with this version.

## Macintosh Support

---

Vector Development is committed to creating shareware solutions for you! Due to a restructuring in the company we no longer make Macintosh products.

All current Macintosh products are now supported and maintained by:

Yin Yan Productions  
<http://www.cjnetworks.com/~machack/yinyan.html>

Please, send any comments about Vector Development to one of [our addresses](#).

## Postcard Offer

---

Vector Development is making a Postcard Offer.

Send us a postcard and we will notify you of updates and new products. Include a mailing address and an e-mail address.

This service is absolutely free and does not constitute registration since there is none, with the exception of Dunce Gold. We will accept letters as well especially if they include comments!!

Please send to:

Vector Development  
C/O Dunce Postcard  
3735 SW Sena Dr.  
Topeka KS 66604-1754

Version  
2.52

Fixed the following:

- A DLL problem with 2.51

2.51

Fixed the following:

- Removed the problem causing registration code.
- Changed back to the bugless URL.DLL file.

2.5

Fixed the following:

- The bug that stopped the password from being entered in Internet Mail dialogs.
- The bug that restricted the length of User Defined settings.
- Updated the close connection code on Automated Connections. This should solve the problems with it not closing connections.
- Made the Age Warning only occur once.
- The bug that caused some users to be continuously prompted to install the URL.DLL file.
- Redid the Version Detection to make Duncce properly detect the version of RAS files it is dealing with. This should make it work properly with ISDN 1.1 (no gurantees though because it has always worked under ISDN 1.1 for me).

New Stuff:

- Added a menu for the tray item and changed what the buttons do.
- Updated the version of the URL.DLL file that is being shipped to match that of Internet Explorer 3.0 (4.70.1155)
- Added the -q command line option to force Duncce to shutdown without prompting you.
- Updated the encryption to make it stronger...
- Reworked some of the text in some dialogs to make it more understandable.
- Made the About box have HyperLinks to the web sites and our email.
- Automated Connections will now used the cached password unless told to use a different one.

2.4

Fixed the following:

- Various problems with distinctions between similarly named dialogs.
- Ini File now properly updates to new versions from old versions.
- Problems related to Connected To being minimized.
- Bugs related to MSN returning a cannot complete task at this time.
- MSN settings not being saved properly.
- The Default Directory wasn't working properly.
- AM/PM \*AGAIN\*
- Redials for Automated Connections displaying MessageBoxes.

- Run Item #2 settings saving problems.
- WinGate/IE/AutoDial:Connected To's not being recognized.
- Made Dunce work with Nashville in its various versions (some configuration may be necessary).
- Bugs related to machines that don't have DUN installed on them.
- Problems with Dunce attempting to dial out an Automated Connection when you're already connected.
- Connected To now correctly minimizes after a Forced Reconnect.
- Redialing for Automated Connections now can be disabled, previously it would do it even if you disabled it.
- Error messages for Automated Connections now Close by themselves after 30 seconds.
- Automatically Connect to at 12:00 P.M. (time is an example) now displays the correct time.
- Programs now restart after a Forced Reconnect, see the details on that above.
- 1A No Dialtone error is now considered a redial even for Automated Connections.

New Stuff:

- Tabbed Dialog for the Main Dialog.
- Auto-Close of Applications started by Dunce on Disconnect.
- Auto-Close for Automated Connections.
- AutoDial feature.
- 1 User Defined Dialog that Dunce will handle.
- Command line made to force a reload of the ini file.
- Encryption of Passwords.
- Supports the new Microsoft Internet Mail Connect To dialogs.

2.3.1 Was never officially released. Was in beta testing for about three betas and eventually became Version 2.4.

2.3 Fixed the following:

- No longer runs duplicate copies of apps (you can override this though)
- The A.M./P.M. bug in Automated Connections (formerly Timed Connections).
- The tray icon's disabled state is now visible to the color blink, looks nicer anyway.
- The File button in Run Options now works consistently.
- No longer have to restart before new settings in Automated Connections take effect.
- The About Button no longer gives an error message (okay so I wimped out on this one and took out the stuff that caused the problem).
- No longer fails on OSR2 (if you know what this is good otherwise don't worry about it).
- Run Items for Automated Connections now work even if you have Run Items on the Main Dialog disabled.
- Not really a bug but I increased the time limit for the timeouts.

New Stuff:

- Tabbed Dialog for Run Options.
- Default Directory on Run Items.
- You can run things Minimized, Maximized or Normal.
- Expand Details.
- Reworked Automated Connections TOTALLY.
- You no longer need a shortcut on the desktop for Automated Connections.
- You no longer need to enter the path to Guide.exe.
- AutoLoad feature so you no longer need to manually put a shortcut in the StartUp folder.
- And some stuff I can't remember.

2.0.2 Fixed the following:

- Wouldn't always disconnect on timed connections.
- Default directory on runs.
- Multiple parameters for run lines.

2.0.1 Fixed the following:

- Connect to run options
- Reconnect and redial
- Time on the Connect To Dialog.

New stuff:

- Password feature.

2.0 Fixed the following:

- Minimize bug.
- Selection of when the item runs.

New stuff:

- Multiple Runs
- Tray Support.
- Timed Connections.
- MSN and International support.

1.3.2 Repairs another GPF only one report of this.

1.3.1 Fixes the GPF and adds the Quit button.

1.3 Fixed the following:

- Bring to front (z-order) bug. Multiple copies of the options dialog will no longer come up.
- Some very stupid typos.

New stuff:

- Minimize feature

- 1.2 Added time-out adjustments for all of the features (run excluded for obvious reasons). Added the run on connect feature..
- 1.1 Became Freeware, added postcard offer, repaired Grayed Dialog Box Problem. Splash Screen is a one time deal now.
- 1.0 Dunce v. 1.0 Initial Release!





## **A**

[A Better Way to Redial](#)

[About Tab](#)

[Acknowledgements](#)

[Allow Multiple Instances](#)

[Autodial Does Not Work](#)

[Automated Tab](#)

[Automatically Close Connection on No Activity](#)

## **B**

[Bug Reports](#)

## **C**

[Closing Duncie](#)

[Contacting the Author](#)

## **D**

[Distribution](#)

[Donations](#)

[DUN Tab](#)

[Dunce L](#)

## **F**

[FAQ List](#)

[Future Plans](#)

## **G**

[Get Rid of F7 Terminal Screen](#)

[Gold Dunce](#)

[Gold Dunce Order Form](#)

## **H**

[How to Use Dunce](#)

## **I**

[Icon Contest](#)

[Installing the Program](#)

[International Support](#)

## **K**

[Known Bugs](#)

## **L**

[License](#)

## **M**

[Macintosh Support](#)

[Main Dialog](#)

[Main Settings Dialog at Startup](#)

[Misc Tab](#)

[MSN Tab](#)

## **O**

[Other Items](#)

## **P**

[Play a Sound at Connection](#)

[Postcard](#)

## **R**

[Reload Ini](#)

[Resources Not Loading](#)

[Revision History](#)

[Run More than 4 Programs](#)

[Run Options](#)

## **S**

[Shift Key](#)

[Start Internet Mail or Internet News](#)

[Startup](#)

Storing Password

System Requirements

**T**

Timed Connections

Tips Page

**U**

Uninstalling the Program

**W**

What Does Duncie Do

Name:

Company:

Address:

Phone:

Email:

Add \$5.00 postage and handling for floppy copies in North America (U.S, Canada, and Mexico) and \$10.00 elsewhere. If you do not add postage below we will assume you only want Online delivery.

Online delivery is achieved through a user id and key that is given to you via email. You then use that user id and key to download the software from our web site. This key is good for 10 days or 10 downloads whichever comes first. If you experience difficulty downloading or are unable to download during the 10 days we can reissue a key for you. Everyone will receive a new user id / key for new versions of the program.

\$20 U.S. funds times	copies =	\$
Shipping		\$
Total		\$

All payments by mail must be made in one of the following manners:

- U.S. and International Money Orders.
- Personal Checks drawn on a U.S. bank.
- U.S. Cashier's Checks.
- U.S. Cash (although not suggested).
- U.S. and International Traveler's Checks.
- American Express Money Orders.
- Electronic Funds Transfers (contact Vector Development for details).
- Hard copy Purchase Orders, in most cases (we reserve the right to refuse any Purchase Order).
- Credit cards through online ordering only (this may change in the future)

Send this form to:

Vector Development  
Dunce Gold Orders  
3735 SW Sena Dr.

Topeka KS 66604-1754  
USA

## International Versions Support

---

Dunce now supports all versions of Windows to my knowledge!!! This requires no intervention from the user, Dunce detects your version on the fly. Enjoy!

There are exceptions to this: Some versions of Nashville are not detected properly on the fly. Read [Dunce tips](#) for information on how to override the auto-detection system. This problem is marked by a dialog at startup saying Resource for International Use Failed to Load or that some resources were not able to be loaded out of specific files.



